

## GEROfit® REX fitting system

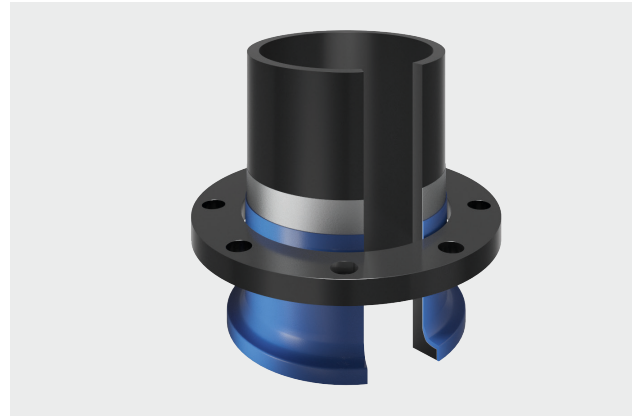


### GEROfit® REX

The danger of contamination of drinking water by permeation increases in contaminated soils and zones like industrial areas, landfills, graveyards or flood areas. **GEROfit® REX** solves this problem permanently. The barrier between the core pressure pipe and the protective jacket protects the media and the environment.

### GEROfit® REX system solution

A barrier pipe system is only as strong as it's weakest part. To ensure the same high quality from **GEROfit® REX** pipes in the whole pipeline system, Gerodur offers now also a wide range of pre-manufactured, impermeable fittings. This saves working time on the construction site for post-factory coating and ensures a steady reliable protection against chemical influences from outside.



### Fitting program

- Seamless bends 11° - 90°
- Stub ends - long and short
- Tee's - long and short, reduced
- Branches (metallic)
- Reducers - long and short, concentric and eccentric

### Dimensions

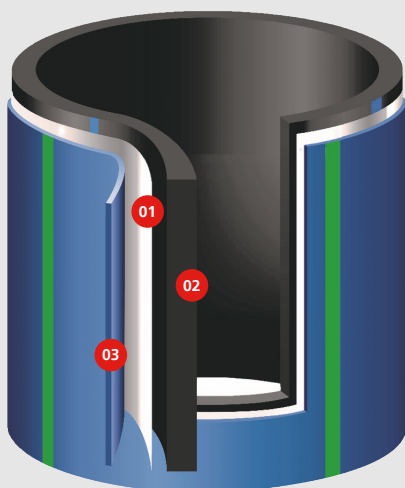
90 mm - 630 mm

### SDR classes

7.4 | 9 | 11 | 17

Further dimensions and SDR classes on request.

RFP form available.



Impermeable **GEROfit® REX** thanks to intelligent film barrier.

- 01 The bi-axially oriented polymer-matrix film with an embedded metal permeation barrier forms an intelligent barricade.
- 02 The inner, media-bearing core pressure pipe consists of resistant PE 100-RC.
- 03 The additive protective jacket made of modified polyolefin compound surrounds the pipe system and provides permanent protection - an active countermeasure to notches and scratches.

**kiwa** BRL K17101 / Class II & III

# GEROfit® REX-Tape



Professional addition to the permeation barrier at connection points of **GEROfit® REX** pressure pipe systems for the drinking water supply

- 01 Use when laying in contaminated soils according to the manufacturer's approval.
- 02 Subsequent wrapping of butt welded joints or electro-fusion fittings on the construction site.
- 03 Factory-made wrapping of bends and other fittings made of PE 100 or PE 100-RC.

## Product features

- Permeation-tight to protect against harmful substances
- Guarantee of high drinking water quality
- Increased tensile strength and elongation at break

## Form of delivery

- Single tape system, rolls of 50 m in length
- Tape width 50 mm
- Color silver gray

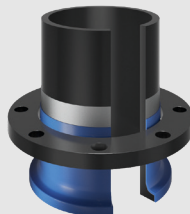
## Processing instructions

- Cold processable and self-adhesive
- Number of layers depending on the application
- Width of the jacket cut back depending on the dimension
- Use with wrapping width > 50 mm with at least 50 % overlap
- Subsequent wrapping between both sides protective jacket ends
- Laying with/without sand bed in with **GEROfit®** sealing tape
- Trenchless pipe laying in with **GEROfit®** sealing tape and **GEROfit®** fabric tape

The **GEROfit® REX** system consists of:

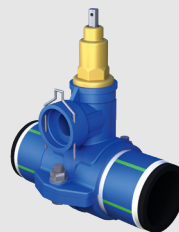
### GEROfit® REX barrier pipe

PE 100-RC core pipe with an intelligent metallic permeation barrier (barrier pipe) and an additive protective jacket - DVGW certified for drinking water supply, KIWA certified for installation in contaminated soils, DIN CERTCO certified for the alternative/trenchless installation methods (PAS 1075).



### GEROfit® REX tapping valve

Metal tapping valve for simple and safe installation on the permeation barrier layer, no costly additional post-wrapping required; direct connection of the impermeable **GEROfit® REX** house connection pipe by plug-in connection.



### GEROfit® REX range of molded parts

Bends, T-pieces, reductions, V-collars etc. made of PE 100-RC with an intelligent metal permeation barrier and an additional protective jacket.

### GEROfit® REX accessories

Post-wrapping with tested impermeable **REX-Tape** and protective bandages for mechanical surface protection at e.g. butt-weld joints.