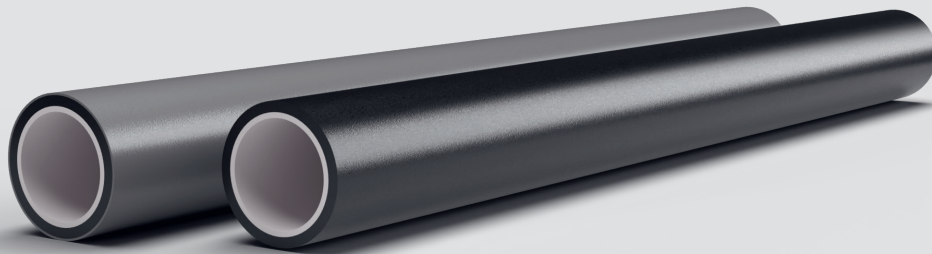


High-performance, abrasion-resistant polyethylene (PE) pressure pipes for sediment transport.

Extremely resistant to abrasion – ideal for the toughest applications in mining, industry and plant engineering. GEROtec® MINING goes one step further than conventional HDPE pipes, and further than conventional PE 100 or PE 100-RC pipes. An intelligent multi-layer pipe construction featuring a special additional inner layer of thermoplastic elastomer is sure to impress users.

Designed for demanding applications: GEROtec® MINING reliably conveys abrasive materials – whether dry solids such as powders and granules or water-solid mixtures subject to high wear.



Cost-effective right from the start: Compared directly with steel or rubber, polyethylene pipes are clearly the more cost-effective solution. Lower material costs and easier installation significantly reduce your investment costs right from the initial installation.

Long-term benefits: Minimal wear and tear, combined with high heat and UV resistance, ensure an exceptionally long service life with low operating and maintenance costs.

During the hydraulic transport of solids such as sand, coal slurry or ore, as well as during the pneumatic conveying of granulates, the internal surfaces of piping systems are subjected to severe mechanical stress. Compared to all previously known material alternatives, GEROtec® MINING is characterised by a significantly longer service life.

Your benefits at a glance

- Certified quality – tested in accordance with DIN CERTCO and DIN EN ISO 9001
- Significantly less abrasion than conventional PE pipes
- Light-coloured inner layer – wear can be checked at a glance at any time
- Up to 6 times longer service life in high-stress areas compared to PE100
- Media pipe made of PE100/-RC in accordance with DIN EN ISO 15494

Forms of supply

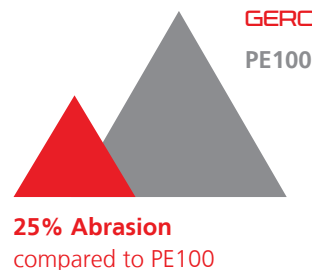
- Straight length
- Coils
- Reels

Dimensions

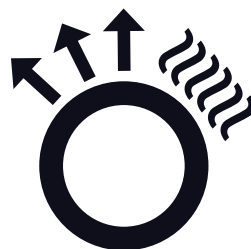
- DN/OD 110 mm bis 630 mm, or on request
- SDR 11 (PN12,5) / 13,6 (PN10)

Your connection options

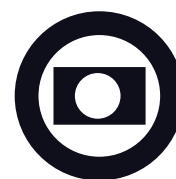
- FDC – Fast Detachable Connection
A flange connection offering the advantage of a continuous, abrasion-resistant inner layer. Combines electro fusion with an externally welded collar.
- Electro fusion in accordance with DVS
- Clamp connectors for quick assembly



abrasion-resistant

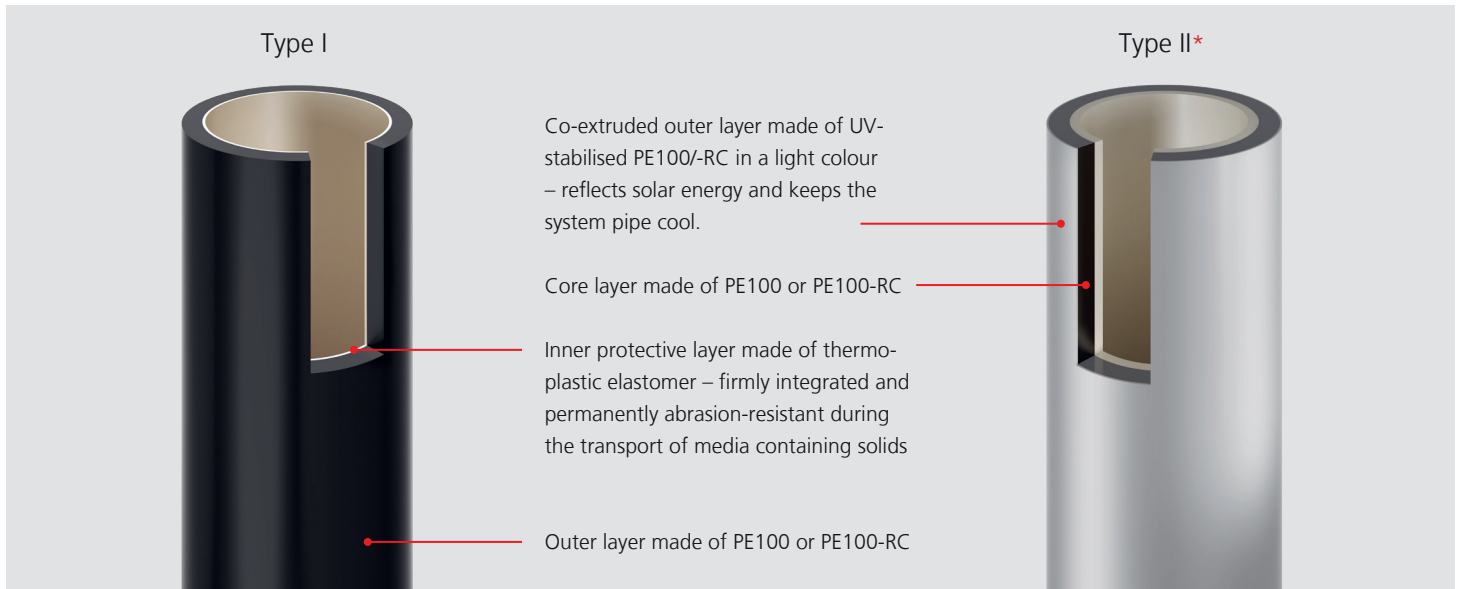


thermally reflective*



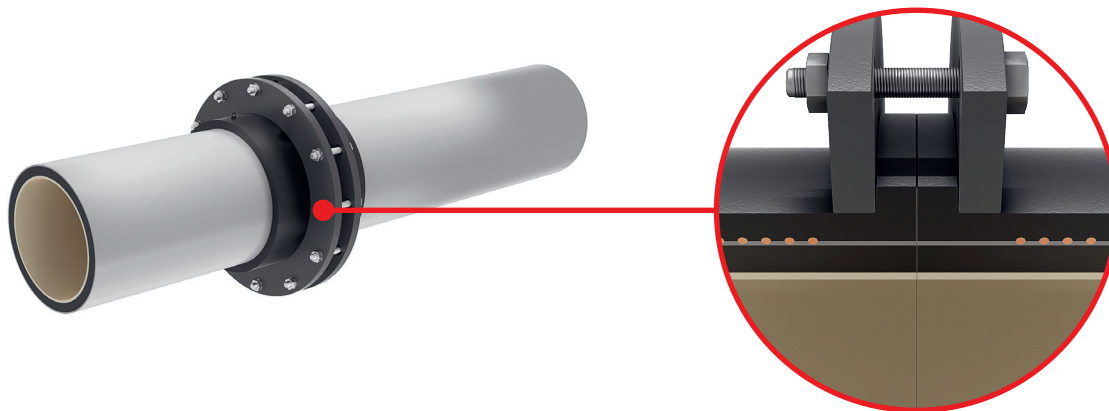
suitable for inspection

Pipe structure



*The properties refer to GEROtec® MINING, Type II

GEROtec® MINING FDC weld-on collar



The innovative FDC weld-on collar makes it possible: a detachable flange connection – without compromising on abrasion resistance. Pipe sections can be quickly installed or replaced, whilst maintaining continuous wear protection.

- Seamless transition to other materials
- Continuous, abrasion-resistant inner layer – no joints
- No weak points along the entire route

A systematic approach

GEROtec® MINING can be installed with great flexibility: all standard methods for PE pipes are available – including butt welding and electro fusion, as well as other proven techniques. Matching fittings and bends in all sizes and angles complete the system, ensuring a seamless, uniform pipeline that is a single, integrated unit.



You can find all the information, as well as accessories and installation instructions, on our website.

