

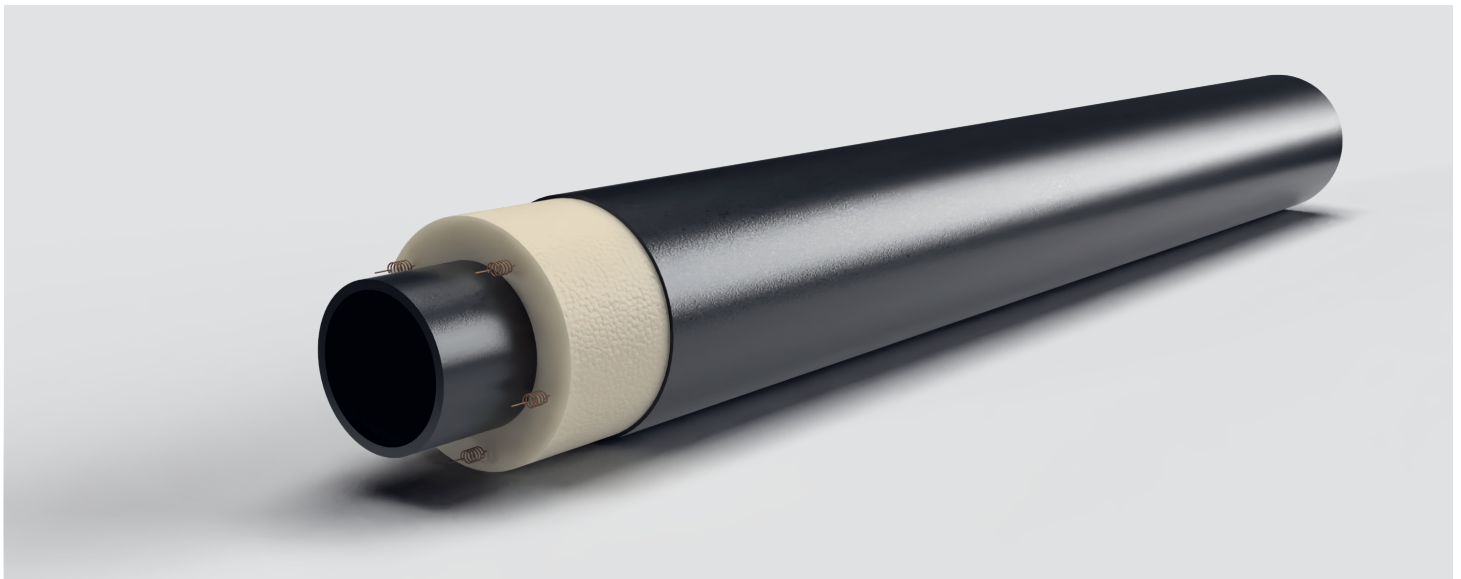
GEROtec ANERGIE ISO

Ready for the future:
Working together for the energy transition

Energy networks – also known as cold local heating – are the key technology for the climate-neutral supply of neighbourhoods, commercial premises and public buildings. In energy systems, you can combine renewable energy sources and use the ground as storage: economical, environmentally friendly and demonstrably durable.

GEROtec ANERGIE ISO
System solution

Maximum efficiency thanks to pre-insulated PE media pipe and integrated PUR thermal insulation. The thermal conductivity is reduced to as low as $\lambda = 0.026 \text{ W}/(\text{m}\cdot\text{K})$ – available in a choice of three insulation classes. The result: minimal losses, lower operating costs, and maximum investment security throughout the entire service life.



Features

- Single-wall pressure pipe made of PE 100-RC or PE-RT
- Fluid-carrying pipe in accordance with DIN EN ISO 15494
- Optional continuous temperature resistance up to 70 °C (50-year service life)

Dimensions

Dimension [mm]	SDR	12 m
40 x 3,7	11	•
50 x 4,6	11	•
90 x 8,2	11	•
110 x 10,0	11	•
160 x 9,5	17	•
225 x 13,4	17	•
315 x 18,7	17	•
355 x 21,1	17	•

Further dimensions and SDR classes on request.

Forms of supply

- Straight length 12m; further on request

Special features

- Pre-insulated for minimal heat loss
- Flow-optimised fluid transport
- Tested for long-term temperature resistance

Installation

- With or without a sand bed – saving materials and time

Pipe connections using

- Electro fusion and butt welding
- Casing pipe connection using heat-shrink tubing with double sealing



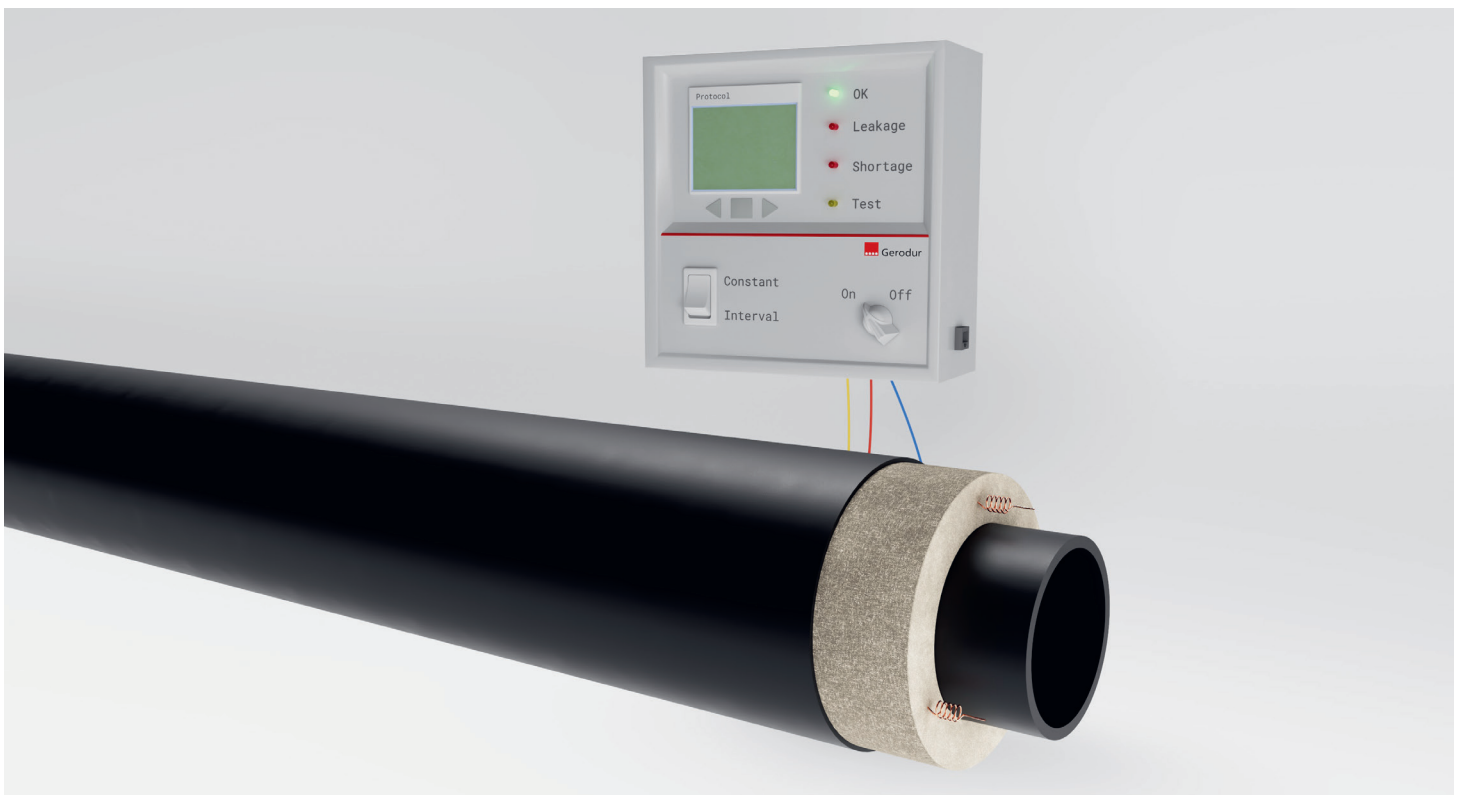
GEROtec ANERGIE ISO Leak detection

Monitoring of the pipe system

Optional leakage monitoring with at least three integrated wires – can be seamlessly integrated into new installations or existing networks. This detects leaks at an early stage and also monitors for cable breaks caused by mechanical overload. Precise localisation is achieved via time-of-flight measurement.

Compliant with standards and regulations

Fully welded PE pipe systems offer outstanding durability with minimal damage rates thanks to their viscoelastic properties. Where leakage monitoring is required for heat transfer fluids containing glycol, we supply it integrated ex-works – in accordance with the *Nordic* or *Brandes* systems – for maximum coverage.



Monitoring systems

- Nordic
- Brandes

Special features

- Installation in existing systems or new installations
- Increased number of wires from DN/OD 315 for more precise monitoring

Further notes

With a pipework diagram and precise length specifications between the access points, you can pinpoint every damaged section with complete accuracy – a clear advantage when maintenance is required.

System components

Pre-insulated fittings in various angles, T-pieces and pre-welded collars complete the system – all from a single source.

Other GEROtec ANERGIE products

Use GEROtec ANERGIE Types 1 and 3 where there are lower requirements for a constant temperature and little or no need for monitoring. Our pipes are colour-coded to clearly distinguish between the supply and return lines.

